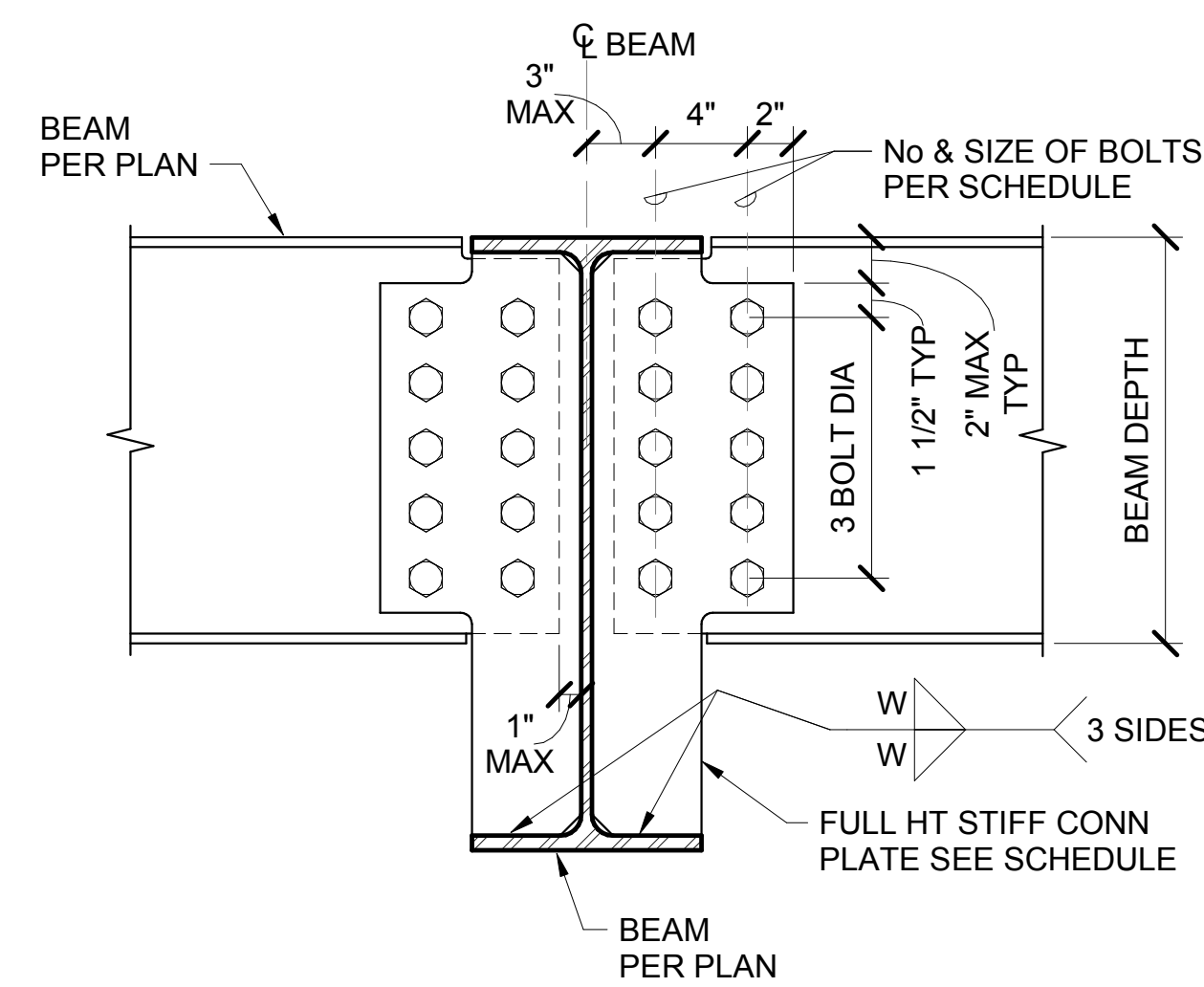




NOTE:  
FOR OTHER INFORMATION,  
SEE ARCH. DWGS.

SKYLIGHT SUPPORT	5
------------------	---

DETAIL ID:	SCALE: NTS	\$1.12
------------	------------	--------



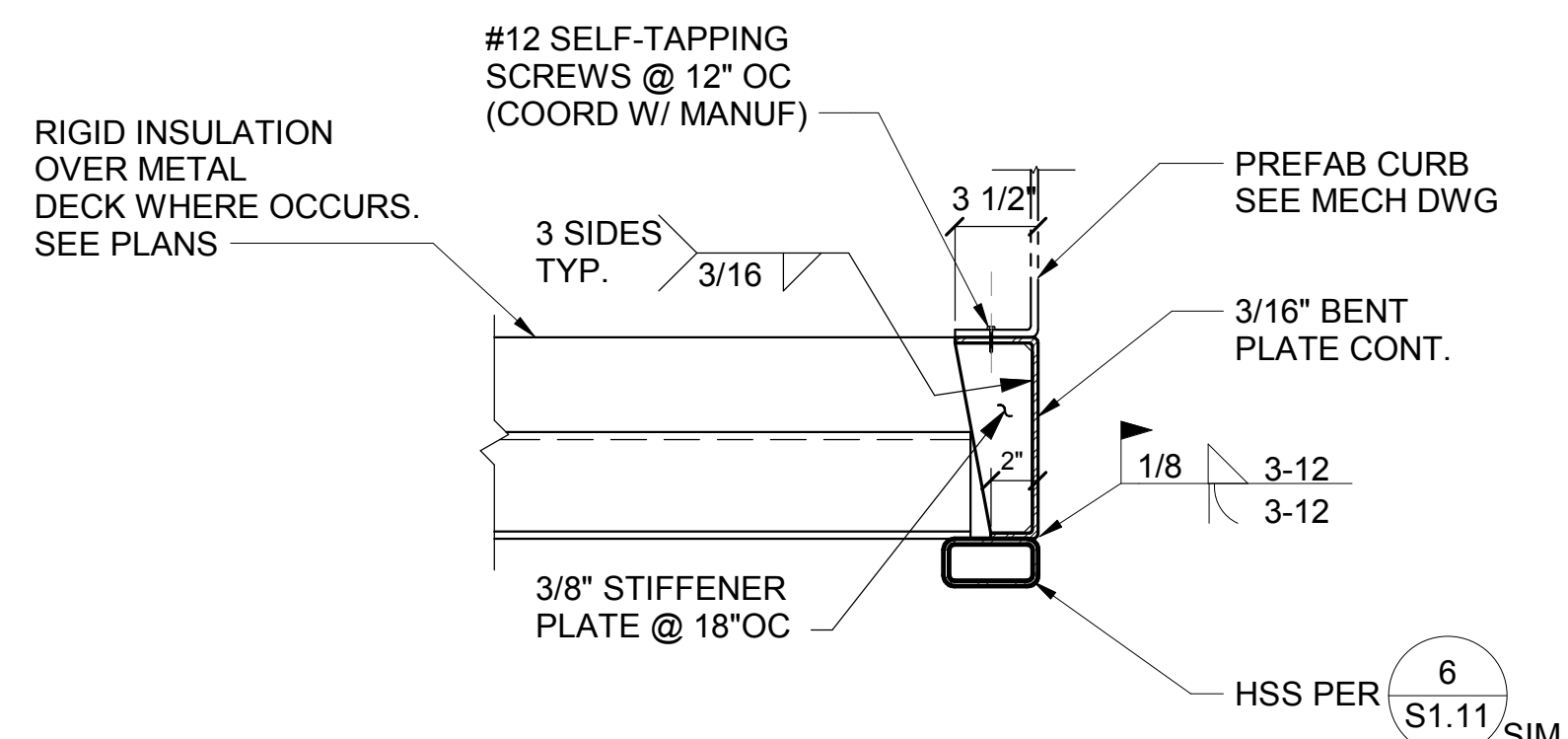
**NOTES:**

1. SEISMIC DRAG CONNECTION IS REQ'D WHERE NOTED THUSLY ON PLANS:  
 DOUBLE ROW  
 SINGLE ROW
2. WELDING SHALL CONFORM TO MOST CURRENT VERSION OF AWES D1.8 AND AISC 341.
3. ALL HOLES AT DRAG CONNECTIONS SHALL BE STANDARD HOLES.
4. ALL PLATES SHALL BE ASTM A572 GR50.
5. FOR SEISMIC DRAG CONNECTION AT COLUMNS PER TYPICAL BEAM TO COLUMN SEISMIC DRAG DETAIL.

CONNECTION SCHEDULE				
BEAM SIZE	A325SC BOLTS		WELD W	THICKNESS OF PLATE
	No	SIZE		
W12x, W14x	(6)	7/8" DIA	5/16"	1/2"
W24x	(12)	7/8" DIA	5/16"	1/2"

### TYPICAL BEAM TO BEAM BOLTED SEISMIC DRAG

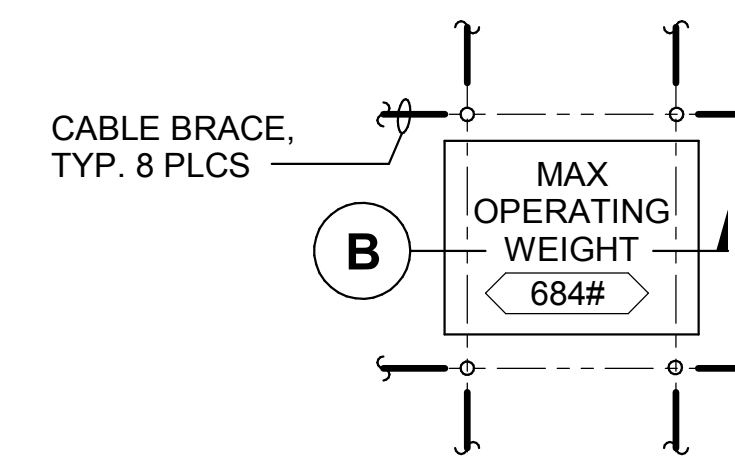
DETAIL ID: ST-BEAM-16	SCALE: NTS	S1.12
-----------------------	------------	-------



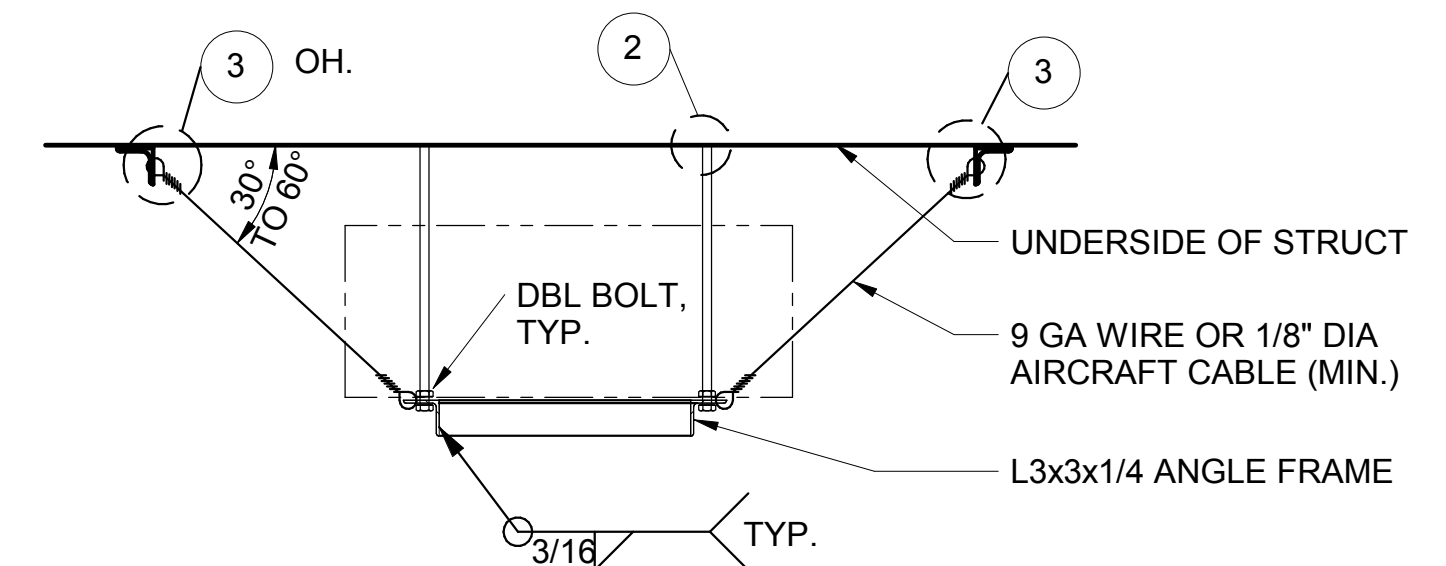
NOTE:  
FOR OTHER INFORMATION,  
SEE MECH DWGS.

<b>EXHUAUST FAN SUPPORT</b>	<b>8</b>
-----------------------------	----------

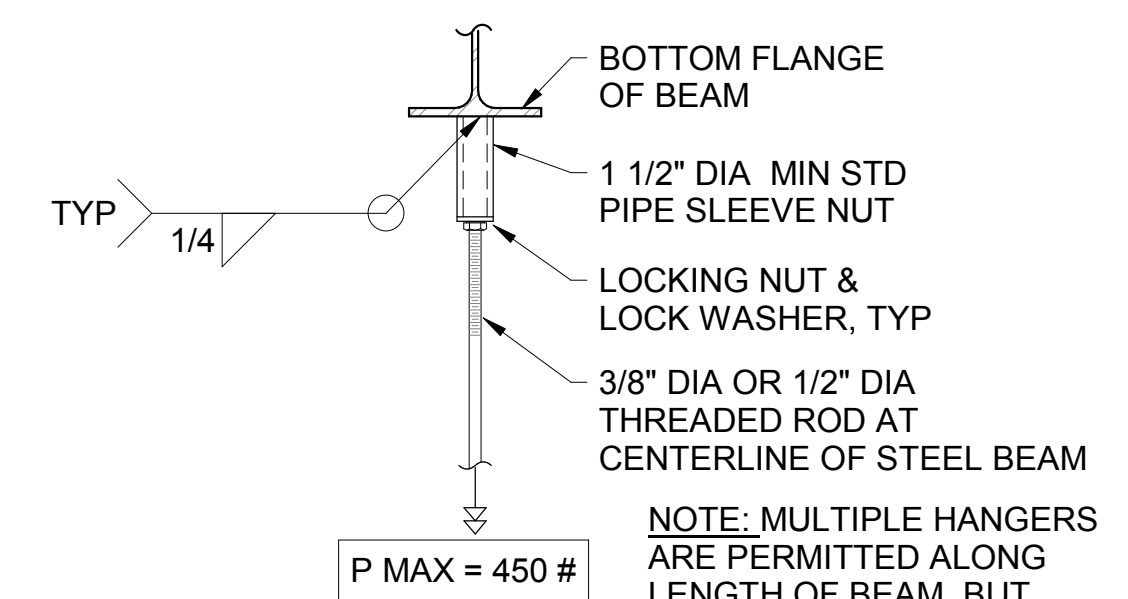
DETAIL ID:	SCALE: NTS	\$1.12
------------	------------	--------



**PLAN VIEW** **A**



### EQUIPMENT SUPPORT DETAIL (B)

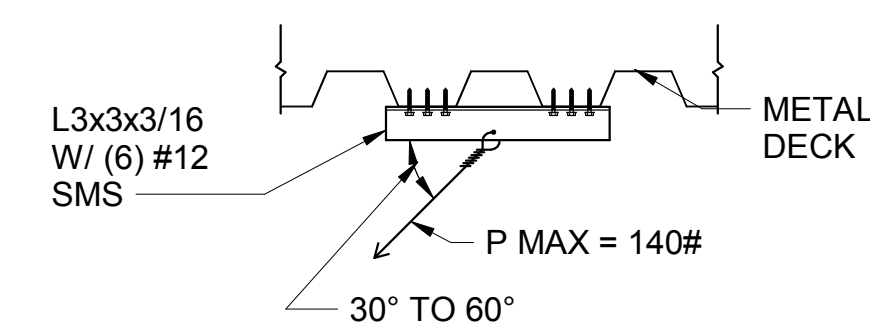


**P MAX = 450 #**

**NOTE: MULTIPLE HANGERS ARE PERMITTED ALONG LENGTH OF BEAM, BUT TOTAL OF ALL HANGERS MAY NOT EXCEED P MAX.)**

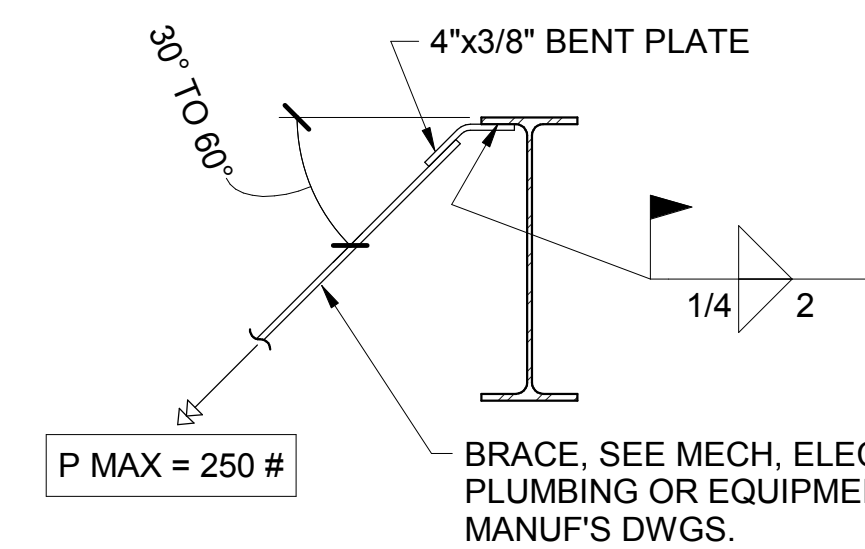
**NOTE:**  
AS AN ALL ALTERNATE TO DETAIL B, CONTRACTOR  
MAY USE TOLCO BEAM CLAMP FIGURE 65 WITH TOLCO  
RETAINERS STRAP FIGURE 69 OR EQUAL.

## HANGER AT STEEL BEAM (2)

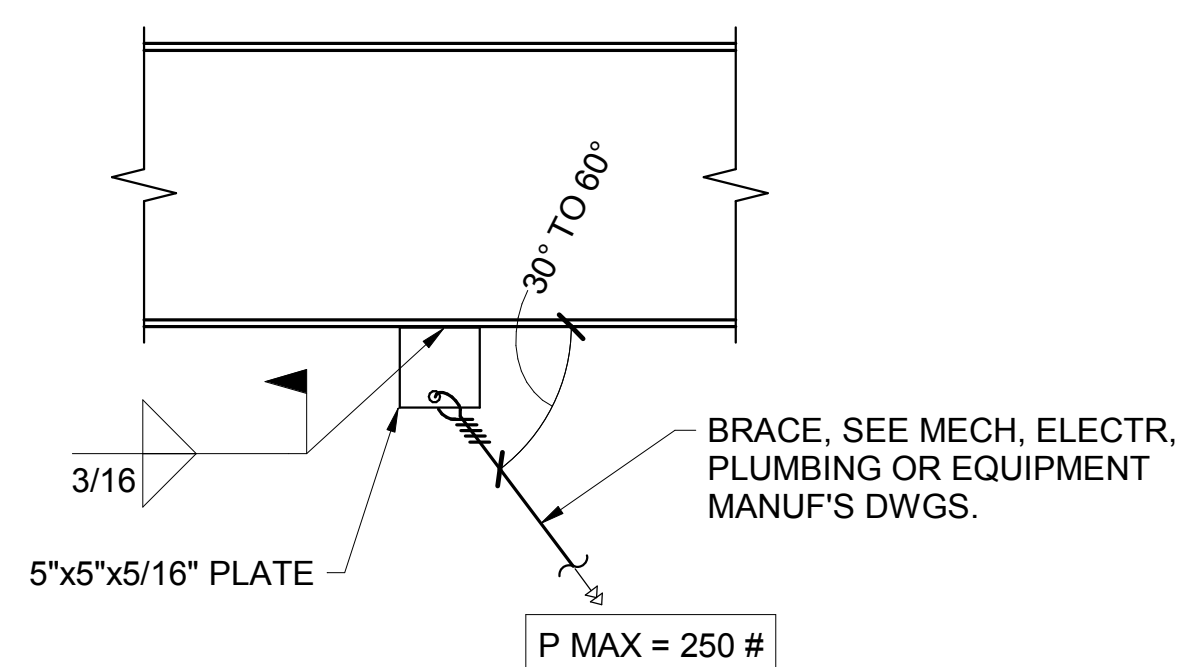


**NOTE:**  
1. WHERE LOADS EXCEED THOSE SHOWN IN DETAILS  
AND SPACING CANNOT BE ADJUSTED TO REDUCE  
LOADING, PROVIDE ASSEMBLY.

### BRACE AT METAL DECK (3)



## BRACE PERPENDICULAR TO STEEL BEAM 4



## BRACE PARALLEL TO STEEL BEAM 5

**TYP DUCT, CONDUIT & PIPE HANGER AND BRACING DETAILS**

DETAIL ID: ST-MD-24	SCALE: NTS
---------------------	------------

## REVISIONS

BRANDOW &amp; JOHNSTON

**STRUCTURAL & CIVIL ENGINEERS**  
700 S FLOWER ST #1800, LOS ANGELES, CA 90017  
TEL: (213) 596-4500 FAX: (213) 596-4599  
JOB #:S19-0231



NORWALK LA MIRADA UNIFIED SCHOOL DISTRICT  
LA MIRADA HIGH SCHOOL NEW  
FOOTBALL STADIUM PROJECT  
13520 ADELFA DRIVE LA MIRADA, CA. 90638

**DSA # 03-120551**

**NAC**  
ARCHITECTURE

NAC NO. 161-19015  
DATE 12/10/2020

DSA BACKCHECK  
SUBMISSION

## TYPICAL STEEL AND METAL DECK DETAILS

## S1.12